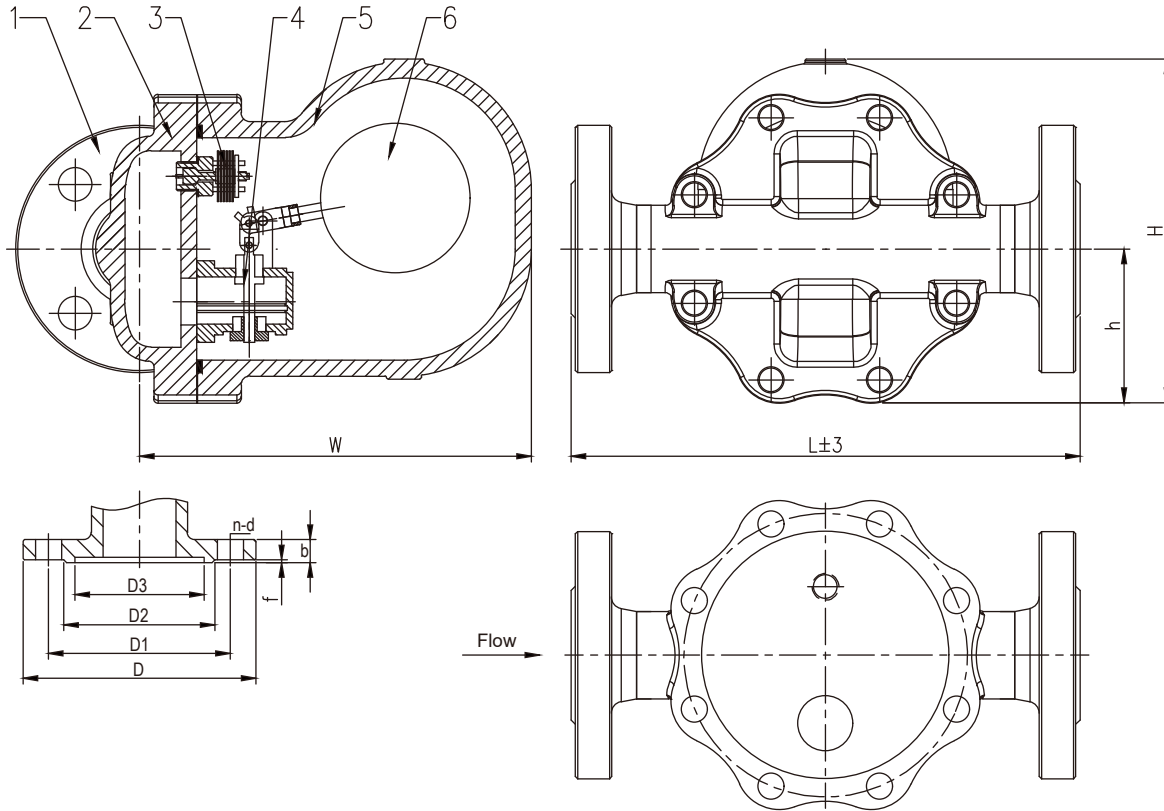


SIZE		Main dimensions(mm)									
DN	INCH	L	D	D1	D2	D3	n-d	b	H	h	W
40	1.5	350	165	125	95	76	4-23	23	236	106	270
50	2	350	175	135	105	88	4-23	25	236	106	270

Tolerance for linear dimensions:

- 1)Length: 10-250mm, tolerance: ± 2.0 mm.
 3)Length: 500-800mm, tolerance: ± 4.0 mm.
 5)Length: 1000-1600mm, tolerance: ± 6.0 mm.

- 2)Length: 250-500mm, tolerance: ± 3.0 mm.
 4)Length: 800-1000mm, tolerance: ± 5.0 mm.
 6)Length: 1600-2250mm, tolerance: ± 8.0 mm.



Technical Specification			
Nominal Pressure		6.4	Mpa
Test Pressure	Shell	9.6	
	Seal	/	
Working Temperature		≤300	°C
Working Medium		Water	

TECHNICAL REQUIREMENTS

- DESIGN AND MANUFACTURER STANDARD: GB/T 22654-2008
- FLANGE END STANDARD: DIN EN1092;
- INSPECTION AND TEST STANDARD: EN 12266-1;

6	Ball	SS304	
5	Body	WCB	
4	Seat	SS304	
3	Exhaust device	SS304	
2	Bonnet	WCB	
1	Flange	WCB	
NO.	Item	Material	Remark

Note: Manufacturing plant keeps the right for reasonable adjustment on drawings according to actual situation in production.